



# PVC / HIW-PVC / HT-PVC PIPE FITTING VALVE (管・配件・閥門)

## BALL FOOT VALVE(VERTICAL TYPE)

福特球型凡而(直式)

SOCKET JF100/THREAD JF200/FLANGED JF300

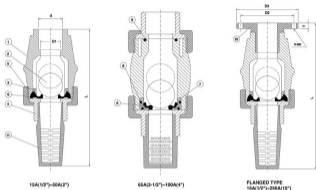


### MATERIALS OF CONSTRUCTION

No.	Parts	Pcs.	Materials
1	Body	1	UPVC, PP, PPG, CPVC, PVDF
2	Ball	1	UPVC, PP, CPVC, PVDF
3	Washer	1	UPVC, PP, CPVC, PVDF
4	Connector	1/2	UPVC, PP, CPVC, PVDF
5	Union Nut	1/2	UPVC, PP, CPVC, PVDF
6	Seat	1	EPDM, VITON
7	Seat Carrier	1	UPVC, PP, CPVC, PVDF
8	Seat Carrier O-ring	1	EPDM, VITON
9	Seat End O-ring	1	EPDM, VITON
10	Flanged End	1	UPVC, PP, PPG, CPVC, PVDF
11	Screen	1	UPVC, PP, CPVC, PVDF



# PVC / HIW-PVC / HT-PVC PIPE FITTING VALVE (管・配件・閥門)



**DIMENSIONS TABLE**

Standard Non. size through	JIS										ANSI										DN												
	Unit:mm										Unit:inch										Unit:mm												
	D1		D2		D3		D4		L		D1		D2		D3		D4		L		D1		D2		D3		D4		L				
Size	Socket	Size	Socket	Size	Socket	Size	Socket	Flange	Flange	Size	Socket	Size	Socket	Size	Socket	Size	Socket	Flange	Flange	Size	Socket	Size	Socket	Size	Socket	Flange	Flange	Size	Socket	Flange	Flange		
15-12	15	PT	22	15	36	4	15	136	136	150	18	069	NPT	0.84	2.275	3.300	4	0.60	0.40	0.40	0.62	0.62	15	FG2	35	45	45	4	14	136	136	150	18
20-24	20	PT	28	25	63	4	15	164	164	180	18	0.75	NPT	1.05	2.750	3.675	4	0.60	0.45	0.45	0.70	0.62	20	FG4	25	75	105	4	14	164	164	180	18
25-1	25	PT	32	30	75	4	19	180	180	202	18	1.02	NPT	1.32	3.425	4.250	4	0.60	0.50	0.50	0.85	0.62	25	31	32	85	115	4	14	180	180	202	18
35-1/4	35	PT	38	30	105	4	19	226	226	250	18	1.42	NPT	1.67	3.569	4.625	4	0.60	0.60	0.60	0.90	0.70	35	31-1/2	41	100	140	4	18	226	226	250	18
40-1/2	40	PT	48	30	140	4	19	226	226	250	18	1.42	NPT	1.81	3.675	5.000	4	0.60	0.60	0.60	0.90	0.70	35	31-1/2	38	110	160	4	18	226	226	250	18
50-2	40	PT	60	30	160	4	19	254	254	280	21	1.38	NPT	2.38	4.750	6.000	4	0.75	1.00	1.00	1.14	0.82	40	FG2	40	125	160	4	18	254	254	280	21
65-2 1/2	45	PT	70	30	175	4	19	305	305	305	20	2.36	NPT	2.88	5.300	7.000	4	0.75	1.20	1.20	1.315	0.75	45	FG2-1/2	70	140	180	4	18	305	305	305	20
80-3	55	PT	80	30	180	6	19	370	370	400	20	3.15	NPT	3.51	6.000	7.500	4	0.75	1.40	1.40	1.574	0.80	40	FG2	90	180	220	8	18	370	370	400	20
100-4	100	PT	114	30	210	6	19	465	465	500	20	3.24	NPT	4.51	7.200	9.000	6	0.75	1.44	1.44	1.547	0.80	50	FG2	108	180	220	8	18	465	465	500	20
125-5	120	-	140	30	240	8	25	-	-	790	25	-	-	-	0.98	1.00	6	0.86	-	-	34.10	0.90	150	-	-	240	285	8	25	-	-	790	25
200-10	200	-	220	40	12	25	-	-	1930	25	-	-	-	14.029	15.000	12	1.00	-	-	40.825	0.90	250	-	-	300	385	12	25	-	-	1930	25	

\* Standard dimensions based on PVC material