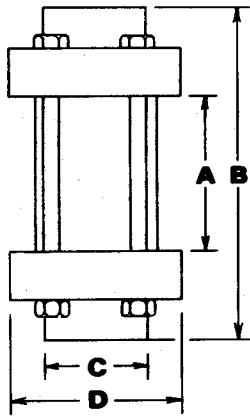
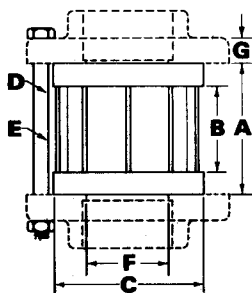


## SERIES "G" SIGHT GLASS DIMENSIONS



PIPE SIZE	"A" VISUAL LENGTH		"B" END/END LENGTH		"C" DIAMETER		"D" DIAMETER	
	INCHES	MILLIMETRES	INCHES	MILLIMETRES	INCHES	MILLIMETRES	INCHES	MILLIMETRES
1/2"	2 1/4	57.1	4 3/4	120.6	1 1/2	38.1	2 1/2	63.5
3/4"	2 1/4	57.1	4 3/4	120.6	1 1/2	38.1	2 1/2	63.5
1"	2 1/4	57.1	5 1/4	133.3	1 3/4	44.4	3	76.2
1 1/4"	2 1/2	63.5	5 7/8	149.2	2 3/8	60.3	3 1/2	88.9
1 1/2"	2 1/2	63.5	5 7/8	149.2	2 3/8	60.3	3 1/2	88.9
2"	3 1/8	79.3	7 3/8	187.3	2 7/8	73.0	4	101.6
3"	3 3/8	85.7	8 3/8	212.7	4 3/8	111.1	5 1/2	139.7

## DIMENSIONS FOR SERIES "GYW" WAFER FLOW INDICATORS (150 LB. ANSI\* & DIN\*\* FLANGES)

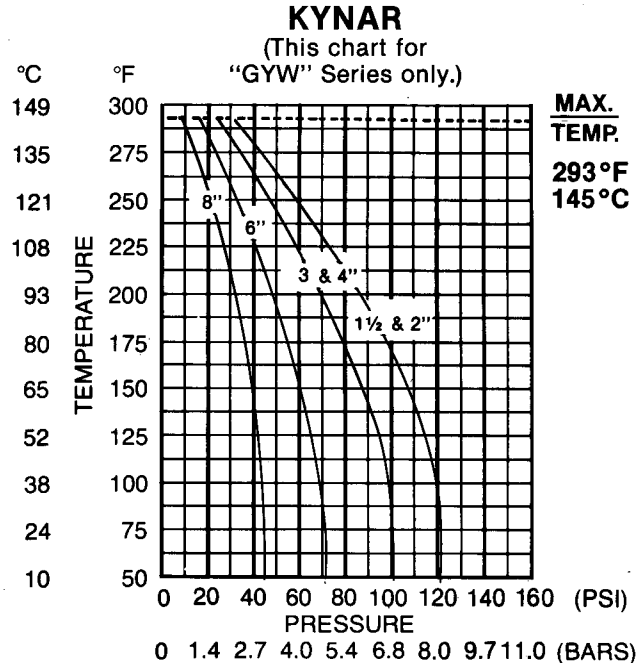
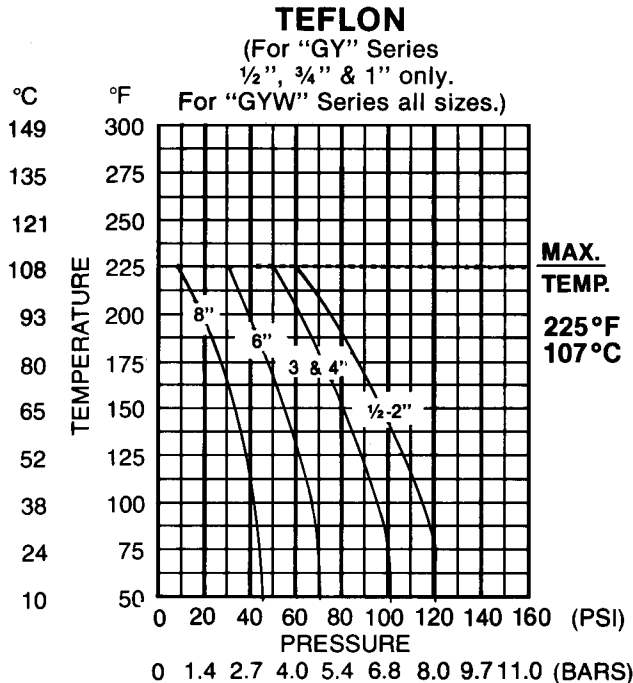
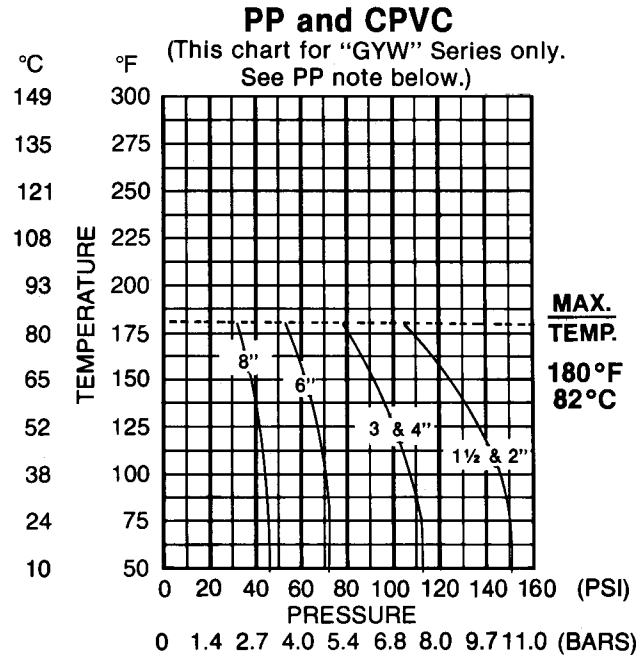
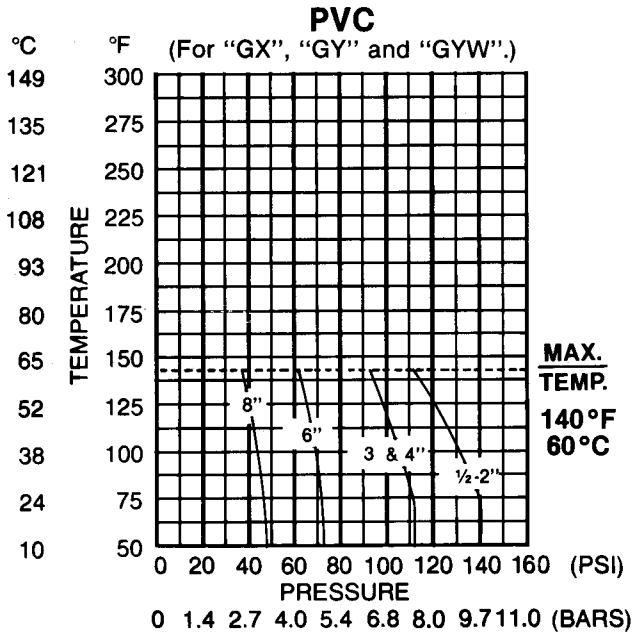


PIPE SIZES		A		B		C		D	E	F		G
INCHES	MM	WAFER ASSEMBLY LENGTH		VISIBLE GLASS LENGTH		WAFER ASSEMBLY DIAMETER		BOLT SIZE (NOT APPLICABLE TO DIN FLANGES) INCHES	NO. OF BOLTS REQ.	MAX. FLANGE I.D. FLANGES		A.N.S.I. FLANGE THICKNESS INCHES
		INCHES	MM	INCHES	MM	INCHES	MM			INCHES	MM	
1 1/2	40	4 1/2	114.3	2 1/2	63.5	3 3/8	92.3	1/2—13 x 5	4	1 9/16	40	1 1/16
2	50	5	127.0	3	76.2	4 1/8	110.4	5/8—11 x 7 1/2	4	2 1/16	52	3/4
3	80	5 1/4	133.4	3 1/4	82.6	5 7/16	143.1	5/8—11 x 8	4	3 1/16	77	1 1/32
4	100	5 5/8	142.9	3 5/8	92.1	6 7/8	164.3	5/8—11 x 9	8	4 5/16	101	1 1/32
6	150	6 1/8	155.6	4 1/4	108.0	8 11/16	220.6	3/4—10 x 10	8	6 5/16	155	1 7/32
8	200	6 1/4	158.8	4 1/4	108.0	10 7/8	276.2	3/4—10 x 10	8	8 5/16	205	1 7/16

\*TYPICAL AMERICAN FLANGES.

\*\*TYPICAL EUROPEAN FLANGES, SIZES 40MM, 50MM, & 80MM UTILIZE O-RING ON WAFER ASSEMBLY DIAMETER TO ACHIEVE "C" DIMENSION.

# PRESSURE AND TEMPERATURE SPECIFICATIONS



## POLYPROPYLENE NOTE

All threaded connections on Series "GY" and "GL" virgin Polypropylene flow and level indicators are concentrically machined and designed to handle working pressures up to 50 PSI (3½ Bars) at 185°F (85°C) as well as full vacuum. These connections, however, could leak at almost any pressure due to the unstable nature of the virgin Polypropylene under pressure. If such a leak should occur, the threaded connection should be properly fillet welded. Generally speaking, these leak problems are almost non-existent with vacuum applications or pressures under 15 PSI (1 Bar). The above note excludes Series "GYW" wafer indicators. For "GYW" only, use PP and CPVC chart above.